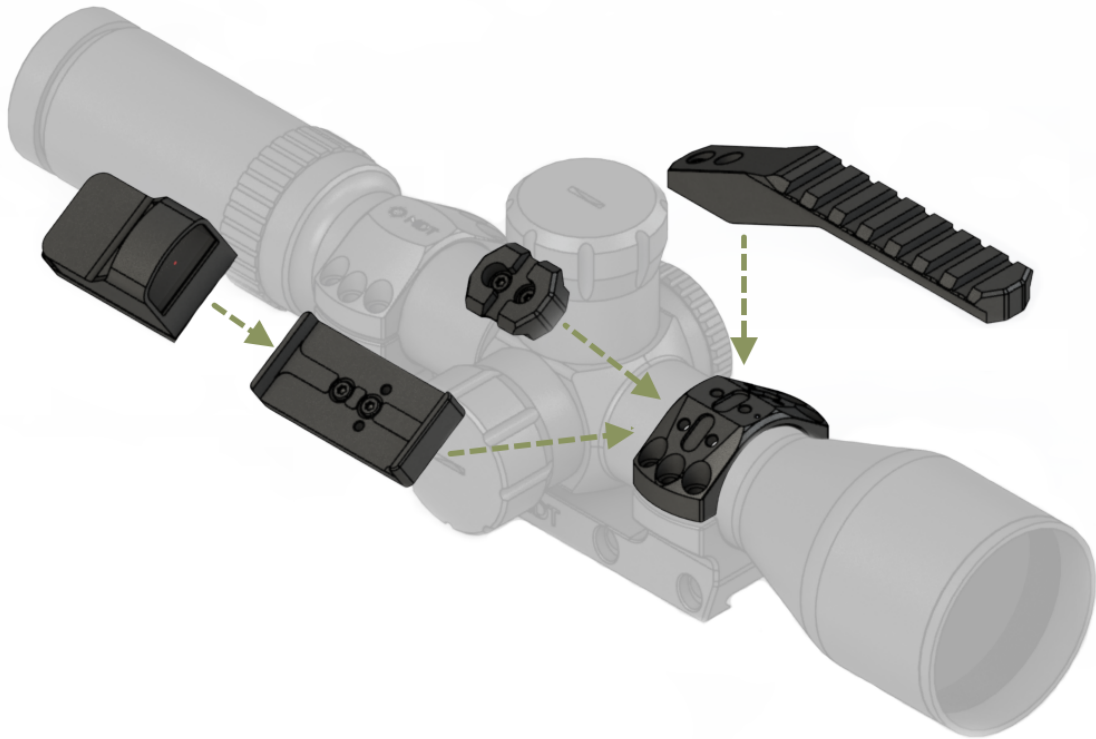


SCOPE RING ACCESSORY CAP

V1.0 Aug 2019



Scope Ring Accessory Cap

Thank you for purchasing the MDT Scope Ring Accessory Cap.

MDT has designed its Scope Ring Accessory Cap to allow attachment of various accessories to the scope rings. This increases the versatility of a shooter's rifle by allowing attachment of secondary optics for faster target transition, attachment of data cards, and many other attachments. The cap itself has 3 mounting positions, 11 o'clock, 12 o'clock and 1 o'clock, to allow the shooter to position accessories as they see fit.

MDT has chosen to provide shooters with many options by also supporting various interfaces such as the Picatinny and the Glock MOS interface, while also providing different designs to suit every shooter's needs by also releasing a 1" picatinny rail, a 5" extended stepped picatinny rail and an MOS adapter plate.

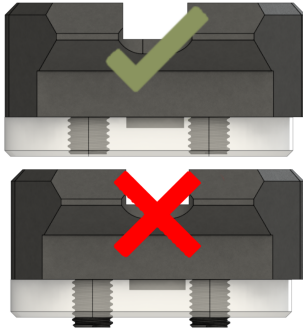
The Scope Ring Accessory Cap is available in both 34mm and 35mm. It is machined from 6061-T6 and finished with a hard black anodize.

CAUTION: AVOID RESTING OR HITTING THE BARREL AGAINST ANY SURFACE WHILE HANDLING THE ACTION, STOCK, AND CHASSIS.

TOOLS REQUIRED

- T25 Torx Wrench
- T10 Torx Wrench

PRE-INSTALLATION



1. To ensure that the accessory you have chosen will work properly with the Scope Ring Accessory Cap and that the included fasteners do not contact your scope, MDT has included the MDT SLCT tool.

2. Before installing the accessory onto the Scope Ring Accessory Cap first place the SLCT onto the bottom of your chosen accessory, slot side up, and align it with the countersunk holes in the accessory. Be sure to match up the alignment dot on the bottom of the accessory with the alignment dot on the SLCT.

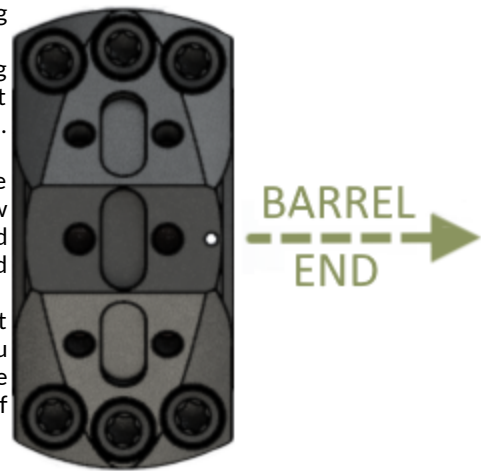
3. Place the chosen accessory's included fasteners through the accessories countersunk holes and into the holes in the SLCT.

4. Either glide your finger over the bottom of the SLCT or carefully look to ensure that the screws do not protrude past the face of the SLCT. This will ensure they cannot make contact with your scope.

5. If you do have screws that protrude past the SLCT please contact MDT support.

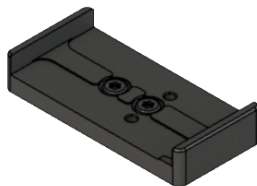
INSTALLATION

1. Remove the existing front/back (shooters preference) scope ring cap.
2. Install the MDT Scope Ring Accessory Cap onto the existing scope ring lower. When installing the scope ring cap ensure that the top alignment dot is facing towards the end of your barrel. This will ensure that it is facing the correct directions.
3. Tighten the Torx screws down slowly, on the side of the alignment dots first, and together by first tightening the screw located at the rear position, then the middle position and finally the front position. Continue this until they are tightened down to 25 IN-LB MAX. This will ensure even clamping.
4. When tightening the opposite side of the ring cap down, consult your scope manufacturers website/manual to ensure that you are not over-torquing the screws and causing potential damage to your scope. Repeat the same tightening order on this side of the scope ring cap and tighten the screws to 22 IN-LB MAX.



OPTIONAL ACCESSORIES

Modular Optic System (MOS) Plate



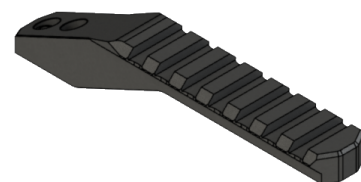
Allows use of MOS compatible Adapters

1" Picatinny Rail



Short rail for attaching picatinny equipped accessories

5" Extended Stepped Picatinny Rail



Stepped rail to allow installation of picatinny equip accessories above or around existing scope

INSTALLATION INSTRUCTIONS

1. To install thread-in the included torx screws while pressing rearward (in the direction opposite to recoil)
2. Tighten to 20 IN-LBs
3. Install with a small amount of thread locking compound on the provided screws, to resist them from loosening under use

WARRANTY

What warranty does MDT provide?

- MDT offers a 100% satisfaction guarantee on all products. If you receive any of MDT product, but you are not completely satisfied, return it to MDT's central office within 30 days for a 100% refund.
- All our products come with lifetime support against defects.
- Performing modifications/alterations to the product voids all warranties, expressed or implied.

How do I claim warranty on a MDT product?

- If you experience a problem with your MDT Rifle Chassis system, call us or initiate a service ticket through the MDT website.
- Warranty claims must show the product model, a contact email, a phone number, and a description of the problem.

How MDT process warranty claims?

- Upon receiving the item, MDT decides whether to accept the warranty claim, and whether to repair or replace the parts, at its discretion.
- MDT accepts no responsibility for loss or damage in transit.
- MDT pays for shipping and insurance charges for the return to the owner, ONLY after accepting the warranty claim.
- If non-warranty parts or services are required, MDT provides an estimate for approval prior to performing any service.

What are the warranty limitations?

- This warranty is exclusive and is in lieu of any and all other warranties, expressed or implied. No implied warranty of merchantability or fitness for a particular purpose are given and any and all liability for breach of any implied warranty or warranty created by law is disclaimed.
- Under no circumstances shall MDT be liable for incidental or consequential damages with respect to economic loss, injury, death or property damage, whether as a result of breach of this warranty, negligence or otherwise.

Jurisdictional Exceptions:

- Some jurisdictions do not allow limitations on how long an implied warranty lasts, so the above limitation may not apply to you.
- Some jurisdictions do not allow the exclusion or limitation of incidental or consequential damages, so the above limitation or exclusion may not apply to you completely or in part.
- This warranty gives you specific legal rights. You may also have other rights that vary from jurisdiction to jurisdiction.

SAFETY GUIDELINES

1. ALWAYS KEEP THE MUZZLE POINTED IN A SAFE DIRECTION.

UNLOAD ALL FIREARMS WHEN NOT IN USE. ALWAYS VERIFY. Never allow your firearm to point at anything you do not intend to shoot. Always handle any firearm as if it were loaded and ready to shoot. Load your firearm only when you are in the field or on the target range and ready to fire. Unload as soon as you finish shooting. Verify that the firearm is unloaded before storing.

2. DO NOT RELY ON ANY MECHANICAL SAFETY.

Safety devices are not a substitute for safe handling procedures. Treat every firearm as if it can fire at any time, regardless of the safety position. Do not touch the trigger until you are ready to fire.

3. UNDERSTAND THE TARGET AND WHAT IS BEYOND THE TARGET.

Do not fire unless you know exactly where your shot is going, and what is beyond the expected point of impact. Never fire at a sound, a movement, or a patch of color. If you cannot see clearly what is beyond the target, DO NOT SHOOT.

4. NEVER SHOOT AT WATER OR AT A HARD SURFACE.

Shooting at water, rocks, or other hard surface may result in bullet fragmentation with unpredictable flight paths.

5. USE PROPER AMMUNITION.

The use of wrong ammunition, mixed ammunition, or improperly reloaded ammunition may result in serious injuries or death, and catastrophic damage to your firearm. Check each round before loading. If in doubt, DO NOT SHOOT.

6. IF THE FIREARM FAILS TO FIRE, DO NOT MOVE.

If the ammunition does not fire when you pull the trigger, stop and keep the muzzle pointed in a safe direction. Wait 15 seconds before opening the chamber. Look away from the chamber while opening it and removing the round. In semi-automatic firearms, remove the magazine before manually cycling the round. Properly discard the round immediately. DO NOT try to fire it again.

7. ALWAYS WEAR EYE AND EAR PROTECTION WHEN SHOOTING.

Wear protective shooting glasses to guard against any combustion discharges, cartridges ejection, or debris resulting from firing your firearm or firearms around you. Also, wear eye protection when you are disassembling or cleaning a firearm to guard against tensioned parts and cleaning solvents. Always use ear protection.

8. VERIFY THAT ACTION AND BARREL ARE CLEAR BEFORE SHOOTING.

Before loading your gun, inspect the action and barrel to ensure there are no obstructions such as snow, mud, excess lubricant, cleaning patches, or any other foreign material.

9. LEARN THE PARTICULAR CHARACTERISTICS OF EACH FIREARM.

Not all firearms are alike. Become very familiar with the firearm before shooting. Learn safe handling procedures for loading, unloading, carrying, shooting and storing each firearm before firing the first round.

10. SHOOT SOBER!

NEVER handle any firearm while under the influence of alcohol, drugs, or any medication that may impair your senses in any form.

DISCLAIMER

MDT SHALL NOT BE RESPONSIBLE IN ANY MANNER WHATSOEVER FOR INJURY, DEATH, OR DAMAGE TO PROPERTY AS A RESULT OF THE INTENTIONAL OR ACCIDENTAL MISUSE OF THIS PRODUCT, OR FROM ITS PROPER FUNCTION WHEN THE PRODUCT IS USED FOR PURPOSES FOR WHICH IT WAS NOT DESIGNED.